

ARQUICONSULT

Your success. Our solutions.

NAVSHIP NAVIGATION THE ADD-ON MADE THINKING ABOUT YOUR SHIPPING BUSINESS.



NAVSHIP

INTRODUCTION

The add-on is a NavShip verticalization of the shipping business developed thinking in specific needs of shipping company and forwarding agents, with a wide range of features to freight forwarding activity and vessels.

It is fully integrated with ERP Microsoft Dynamics NAV, making a powerful tool for all components of the shipping business, covering their specific needs in this areas: sales, freight management, container control, financial management and reporting. This, in addition to normal needs of most companies regarding to account, logistical and administrative factors.

KEY BENEFITS

. Higher productivity - it is all about how the information is shared between the different areas in the company, prevent data's entry duplications;

. Quality information: using only one database allows you immediate access to data management. Besides, eliminating duplications in data entry gives you more accurate data according to different areas, from financial/accounting.

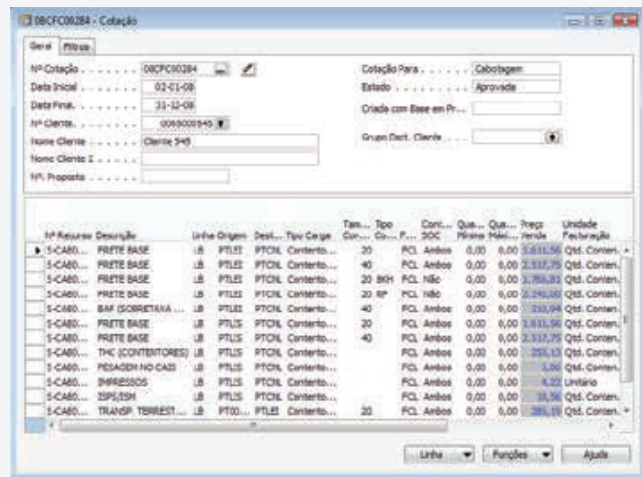
. Integrated business panoramic: the full integration with an ERP gives you the possibility to see your business globally, with links between financial and operation areas.

. Great scalability: when developed on the platform Microsoft Dynamics NAV, guarantees access to all the application tools, which allows you to perform changes and adjustments of features quickly and according to the evolution of the standard product itself.

SALES MANAGEMENT

In this area you can register all contracts with customers, or any submitted proposal. The contracts include all the requirements for shipping activity, as:

- Trade line;
- Port;
- Freight;
- Volume, weight and quantity;
- Container details;
- Payment place;
- Agreed terms (SF, TUP, BAF, etc...);
- Currency.

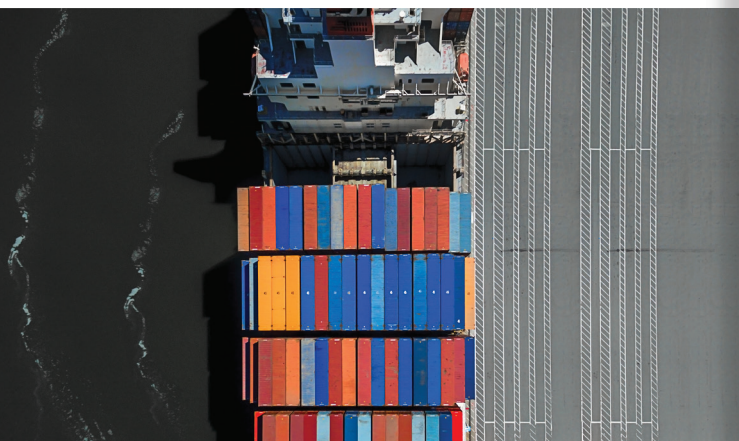


Totally integrated with Microsoft Dynamics NAV, allows you to use all the functionalities of Dynamics NAV CRM, as:

- Contacts management;
- Segments definition;
- Sales team management;
- Outlook integration.

The integration with Dynamics NAV CRM allows, for example, keep following a contract proposal sent to a contact or client, keeping track of all the actions developed by the sales team, etc.

The information loaded in this area keeps all the company business flow, removing the need to re-enter data. In this way, the negotiated contract is available to operational areas, transport effectiveness and respective invoicing.



FREIGHT MANAGEMENT

In this area we define all the processes that will cover all the trip booking, as well as all the invoices and costs, used containers and given documentation.

By creating a process that identifies the scale for a travel of a particular vessel, you can aggregate customer bookings. In bookings is inserted all the necessary information for the documents generation associated with each transport: bill of landing, manifests and loading/unloading lists.

It is also from the booking that is emitted the invoicing and consequent accounting integration.

The following features are also available for add-on:

- . Trips, legs and schedule and scales definition;
- . Multi-shipper trips definition;
- . Budgets/estimates creation to each process, in order to monitor the implementation;
- . Copy of bookings between different processes (vessel/trip) without the need to reinsert information;
- . Part-load freight, Full Container Load (FCL) and Less Than Container Load (LCL);
- . Association of multiple feeder vessels to a process, with the possibility to issue the respective loading/unloading list and manifests.

- . Creating additional service orders associated to the trip. This way, it is possible to estimate the process result faster;
- . Emission of communication document to the client and authorities (gate out/in equipment, arriving notice, booking confirmation, bulk cargo and dangerous cargo);
- . Connection to the equipment module for container availability management;
- . Interface with port authorities for communication manifests.

FREIGHT STORAGE MANAGEMENT

In this module it is made all the freight management to the warehouses for subsequent consolidation, or not, and transport. This management is supported by own records of gate in and gate out warehouse goods.

The tagging of received goods in the warehouse is one of the functionalities in this module.

SHOPPING PROCESS MANAGEMENT

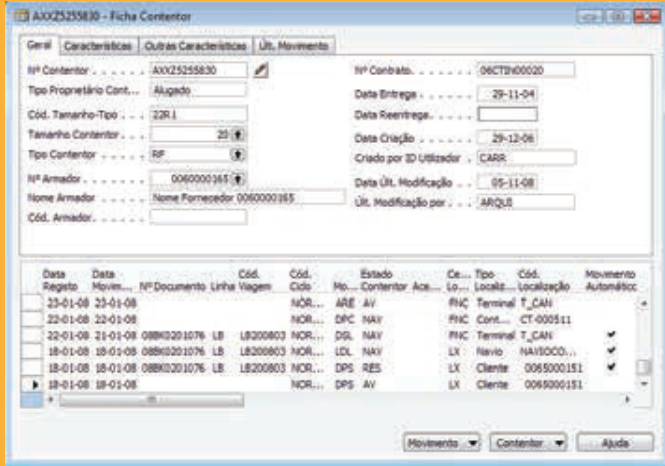
- . Supplier management;
- . Contracts with suppliers, including contractual prices in foreign currency;
- . Definition of prices by service type, period of validity, origin/destination, type and container size, etc...;
- . Contracts classification;
- . Automatic order creation for additional services purchase, from bookings (e.g. land transport);
- . Manual creation of purchase orders, based on contracted prices;
- . Purchase orders predefined definition (standard orders with the classification of costs predefined, contracted prices and suggestion of quantities/value calculation based on the information inserted in the operating system (e.g. TUP, stowage, etc...));
- . Mail management for document validation received from suppliers;
- . Automatic routine for crossing between the invoice amount and the order in the system.



CONTAINER CONTROL

This module allows you to manage the equipment movement, with its own rules configurable according to the control needs of each line.

The information produced by this area serves for calculation base of stays and durrumage to be charged as well as the availability of equipment's management.



The automated generation of container movement and consequent effect on its availability are some of the extras provided by NavShip, due to the fact that this module and the freight management are centralized as a single product.

The possibility of automatic integration movements reported by container depot or berth place are also features of this module.

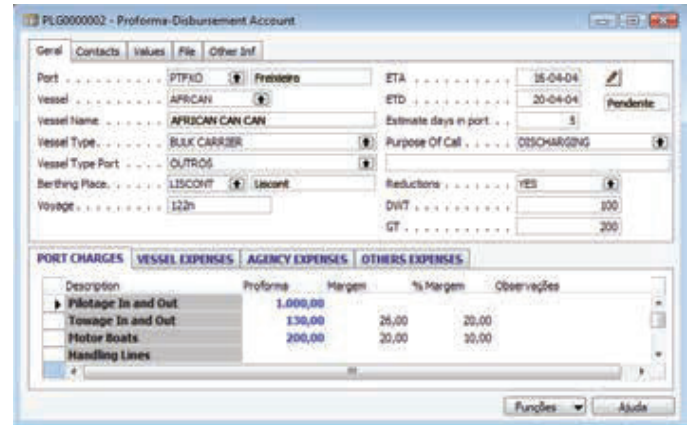
Functionalities:

- . Registration and classification containers (owned, rented, borrowed or SOC);
- . Typing containers movements with the possibility of set different cycles movement;
- . Rules definition, including alerts and restrictions, and precedence container handling;
- . Container automatic movement based on pre-defined events (e.g. confirmation/cancelling the reservation of a container, boarding indication and landing in the container source and destination terminals);
- . Manual handling of one or more containers simultaneously;
- . Automatic import interface of containers movements from files;
- . Rules definition for container durrumage management in every location (client, terminal, park);
- . Park management, terminals and other locations;
- . Contracts management for rental containers;
- . Containers repair information in movements history;
- . Emission of support reports for stays and durrumage, rental values and container fleet management: containers age, use/parking and position of the container, identification and tracking of lost containers, etc;
- . Communication through email for the unloading container;
- . Container order to park via email.

VESSELS AGENCY

This module covers the business needs for the vessels agency in all kinds, since proforma emission until disbursement account of the ship-owner.

The disbursement account emission is made in a centralized way, with access to all documentation created in the process of ensure the correct re invoicing of all costs incurred due to third parties.



Other functionalities:

- . Response time monitoring the requests for agency (ship log);
- . Cost estimates templates; advance cash management and cash to master (CTM);
- . Information management tool to communicate to all entities involved in the process;
- . Association of multiple entities in the same process, to allow the division of responsibility costs;
- . Statement of facts registry.

PROCESSES MANAGEMENT

It is possible to control and closing processes created in operational areas.

You can access quick and easily from each process file to all the information added to the process, bookings, emitted documentation, orders, invoices, budget, etc.

NavShip provides tools to calculate the estimated balance of processes to make their closure by proforma. The application, based on estimated values (initial budget), estimated operational values (from contracts and bookings created, purchase orders in each process) and the actual values (emitted invoices and received invoices) suggest predictable values that allow to close proforma processes and establish intermediate results.

FUNCTIONALITIES RESUME

Sales Management

- . Identification on the system of the proposed conditions for each customer to each transport;
- . Contract versions management with non-acceptance typified reasons;
- . Integration with Dynamics NAV CRM and Outlook;
- . Connection with task's sellers management.

Freight Management

- . Booking creation (space reservation on vessels);
- . Documentation emission:
 - Bill of landing;
 - Loading/unloading list;
 - Dangerous cargo manifest;
 - Reefer cargo manifest;
 - Freight manifest;
 - EManifest automatic integration of manifest with port members;
 - Draft BL and BL correctors;
 - Ro-Ro of vehicles;
 - Ro-Ro of conventional freight;
- . Communication document emission:
 - Arriving notice;
 - Booking confirmation;
 - Gate in & gate out of equipment's authorization;
- . Part-load freight;
- . Budgeting processes;
- . Hiring local services (land transport, shipping, storage).

Gestão Armazenagem de Carga

- . Gate in of freight in the warehouse;
- . Load identification tags emission;
- . Goods consolidation;
- . Gate out warehouse registration.

Processes Management

- . Processes control;
- . Budget/estimate compare;
- . Temporary closure (by estimation) of processes;
- . Accounting integration.

Container control

- . Container cadastre;
- . Cycle configuration for containers movement;
- . Limit configuration to container types motion by localization;
- . Availability control and motion container;
- . Rules definition for derrumage management;
- . Rental management contracts for containers (on hire, on hire).

Vessels Agency

- . Vessels cadastre;
- . Proforma emission;
- . Costs control;
- . Advance cash management and cash to master (CTM);
- . Disbursement account emission;
- . Information management tool to communicate to all entities involved in the process;
- . Scale events registry.

ABOUT ARQUICONSULT

Arquiconsult is an information systems consulting company, based on Microsoft Dynamics technologies, with offices in Barcelona, Bilbao, Lisbon, Luanda, Madrid, Oporto, Riyadh, Salamanca, Seville and Villa Real. Composed by the largest and most experienced team of consultants, having already implemented some of the most complex Microsoft Dynamics Business Solutions and being frequently referred to international clients for their implementations in our country. Arquiconsult is constantly innovating its offer and has several verticals available, for several activity sectors, which add value to Microsoft Dynamics 365.

LOCATIONS

BARCELONA | BILBAO | LISBOA | LUANDA |
MADRID | OPORTO | RIYADH | SALAMANCA |
SEVILLA | VILA REAL

PT (+351) 218 205 610
comercial@arquiconsult.com

ES (+34) 633 907 561
comercial.spain@arquiconsult.com

AO (+244) 939 954 360
comercial@arquiconsult.com

KSA (+966) 50 763 4302
comercial@arquiconsult.com



www.arquiconsult.com

Co-Financed:



UNIÃO EUROPEIA
Fundo Europeu
de Desenvolvimento Regional

