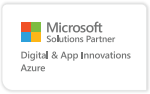
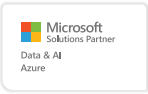


## MICROSOFT INTELLIGENT ORDER MANAGEMENT

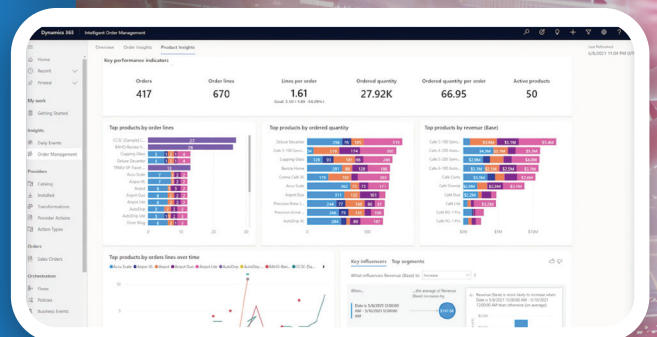
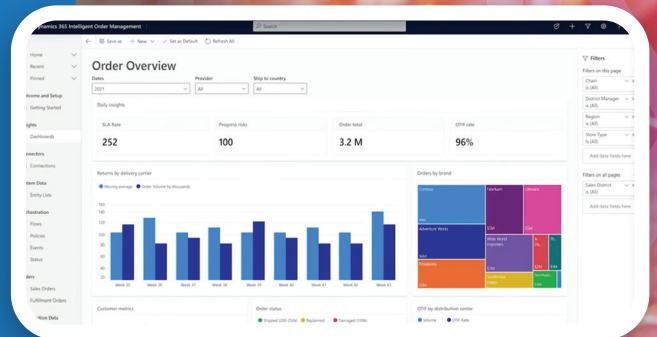


### What is Microsoft Intelligent Order Management (IOM):

Imagine a world where orders effortlessly flow from placement to delivery, with complete visibility at every stage. Microsoft's Intelligent Order Management (IOM) brings this vision to life. Harnessing cutting-edge technologies like artificial intelligence, machine learning, and advanced analytics, IOM orchestrates the intricate dance between your ERP, CRM, Commerce, and supply chain systems, right down to the last-mile delivery. With Microsoft's IOM solution, your business gains the power to streamline order management processes, driving efficiency and elevating customer satisfaction.

### Key Benefits:

- **Optimize Order Fulfillment:** Bid farewell to missed deadlines and disgruntled customers. IOM intelligently routes orders, optimizes inventory allocation, and dynamically adjusts fulfillment strategies, ensuring punctual deliveries, every time.
- **Enhance Customer Experience:** Delight your customers with swift delivery times, precise order tracking, and proactive notifications. Real-time insights into order status and delivery updates keep your customers informed and content throughout their buying journey.
- **Improve Operational Efficiency:** Simplify complex order management processes and eradicate manual errors. By automating routine tasks, reducing order processing times, and optimizing resource utilization, IOM empowers your team to work smarter, not harder.
- **Gain Actionable Insights:** Unlock invaluable business insights from your order data. Robust analytics and reporting capabilities enable you to identify trends, pinpoint optimization opportunities, and make data-driven decisions to propel business growth.
- **Adapt to Changing Demand:** Stay nimble in today's dynamic market landscape. Leveraging predictive analytics, IOM forecasts demand, anticipates inventory needs, and adjusts fulfillment strategies in real-time to meet evolving customer expectations.



## Key Capabilities:

- Automate and Optimize Fulfillment: Employ rule-based fulfillment orchestration, coupled with real-time inventory and AI, to streamline order flows with adept exception handling.
- Manage the Entire Order Lifecycle: Gain real-time insights into every order, from inception to delivery, using customizable integrated dashboards.
- Adapt Quickly to Changing Business Models: Effortlessly model and automate responses to fulfillment constraints using the intuitive drag-and-drop policy designer to configure order flows.
- Get Up and Running Quickly: Scale order management with pre-built connectors to enterprise resource planning (ERP), order intake, fulfillment, and delivery partners.
- Enhance Your Customer's Experience: Elevate customer satisfaction by offering greater flexibility, enhanced transparency, and on-time delivery, consistently.
- Whether you're a small e-commerce startup or a seasoned enterprise with intricate supply chain operations, Microsoft IOM scales to suit your unique business requirements. Seamless integration with existing ERP, CRM, and e-commerce systems ensures swift and painless implementation.



## Additional content - Media

  
Arquiconsult IOM



  
Microsoft



## Regional References:



Majed Al Futtaim (MAF) is being Supported by Arquiconsult to implement IOM across GCC

## Contact Us:

If you're interested in discussing how IOM can help your business productivity, please feel free to email us at

[commercial@arquiconsult.com](mailto:commercial@arquiconsult.com)



ARQUICONSULT  
LOCATIONS

AMMAN | BARCELONA | BILBAO | DUBAI | LISBON | LUANDA |  
MADRID | OPORTO | RIYADH | SALAMANCA | SEVILLE | VILA REAL

☎ KSA (+966) 50 763 4302  
[commercial@arquiconsult.com](mailto:commercial@arquiconsult.com)

☎ PT (+351) 218 205 610  
[comercial@arquiconsult.com](mailto:comercial@arquiconsult.com)

☎ ES (+34) 633 907 561  
[comercial.spain@arquiconsult.com](mailto:comercial.spain@arquiconsult.com)

☎ AO (+244) 939 954 360  
[comercial@arquiconsult.com](mailto:comercial@arquiconsult.com)

[www.arquiconsult.com](http://www.arquiconsult.com)



COMPETE 2020 | Digital 2020 | European Commission